

Surge Relief Valves

PNEUMATIC OR HYDRAULIC OPERATING TYPE

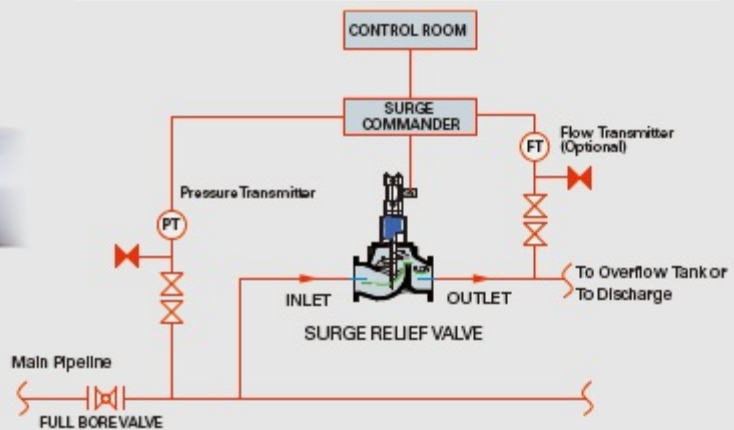


Introduction

Surge Relief Valves are consists of a main valve assembly and Hydraulic Actuator, Accessory, completely assembled and tested as a unit and ready for field installation.

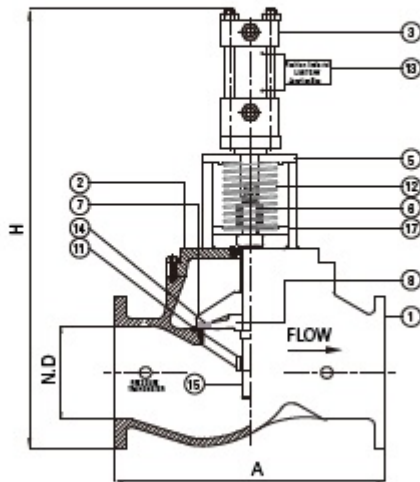
The valves are open when system pressure exceeds its pressure setting and throttle as necessary to limit system pressure to a pre-set maximum pressure. When pressure subsides below the pre-set maximum the valves are close tight.

Typical Installation



Benefits

- Quick response** The high-capacity proportional hydraulic design allows fast response to surge pressure. This results in prompt return to stable pressure conditions.
- Low-maintenance** Due to the absence of any external gas supply such as gas bottle, maintenance is reduced to the bare minimum, making the valve ideal for remote or inaccessible locations.
- High-performance** Surge valve designs are based on simplicity. All components are field-proven to provide maximum protection reliability. They operate solely on fluid static pressure.
- Stable operation** The design of the hydraulic incorporates snap-acting opening when the set pressure is reached and automatic switching to control in the event of continuing high-pressure conditions.



SURGE COMMANDER

Enclosure	Corrosion resistant
Dimension	400(H) x 450(W) x 230(D)
Input Power	24VAC
Out Power	24VDC from internal battery, charger



Dimension Table

Unit = mm

SIZE	2"	3"	4"	6"	8"	10"	12"	16"	20"	24"	Other Size
N. D	50	80	100	150	200	250	300	400	500	600	Available on request
A	275	300	375	500	635	744	850	1035	1178	1250	
H	800	800	900	1000	1200	1400	1600	1900	2200	2500	

Note: Standard flange connection is JIS 5K and others are available on request.

Materials of Construction

1	BODY	ASTMA216 Gr. WCB
2	BONET(COVER)	ASTMA216 Gr. WCB
3	HYDRAULIC ACTUATOR	STEEL
5	CYLINDER FLANGE PLATE	S.S. TYPE 316
6	COUPLING JOINT	STEEL COMM L
7	DISK	S.S TYPE 316
8	DISK RETAINER	S.S TYPE 316
9	STBM SEAL	BUNA-N
11	SEAT RING	S.S TYPE 316
12	SPRING	STEEL
13	POSITION INDICATOR	STEEL COMM L
14	RESILIENT DISK	EPDM
15	STEM	S.S TYPE 316
17	SPRING GUIDE	STEEL COMM L